



# GRIFFIN

THE PROPERTY PEOPLE



## Timber Court, Grays, RM17 6PW

### £1,050



RENT: £1,050.00 - FIVE WEEK DEPOSIT: £1,211.00

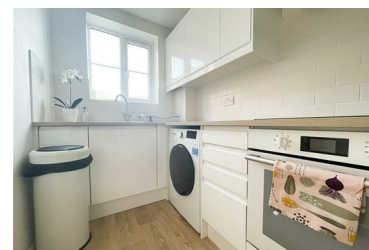
RECENTLY REFURBISHED TO A HIGH STANDARD!

New to the market - modern two bedroom flat in Timber court.

This property benefits from two good size bedrooms, family bathroom, lounge area and a brand new modern open kitchen with appliances. River views can be found from the main bedroom, double glazing throughout, near Grays beach.

Other plus points to the property is two parking spaces, entry phone system and the property is situated in a quiet development.

- TWO BEDROOMS
- PARKING
- ENTRY PHONE SYSTEM
- BRAND NEW KITCHEN
- QUIET DEVELOPMENT
- AVAILABLE NOW
- RECENTLY REFURBISHED



4-6 Queensgate Centre, Orsett Road, Grays, Essex, RM17 5DF  
T: 01375 397872 | E: [lettings@griffingroup.co.uk](mailto:lettings@griffingroup.co.uk)  
[www.griffin-grays.co.uk](http://www.griffin-grays.co.uk)